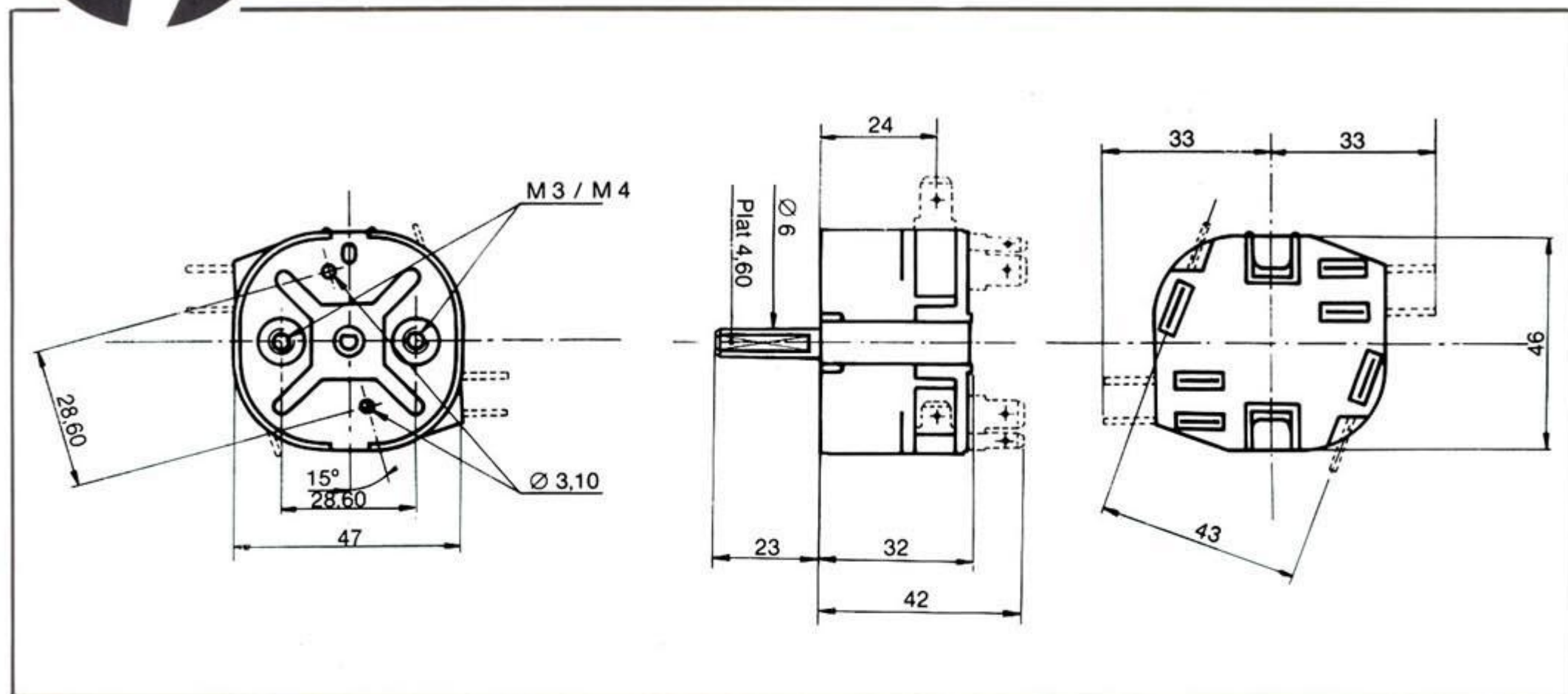




Mi 2



Time switch

Switch

- Ratings 16 (4) A - 250 V~ or 10 (4) A - 380 V~.
- Insulation class II according to CEE 24.
- One to four poles.
- Switching configurations : SPST and DPST N.O or N.C, SPDT and DPDT delayed switches.
- Hold position CCW or end of wind up angle.
- Distance between open contacts ≥ 3 mm.
- Life : 10.000 cycles.
- Dielectric strength : 2.500 V 50 Hz.
- Side or rear 6.35 x 0.8 mm tab terminals.

Timer

- Timing period from 1 minute to 14 hours.
- Temperature range : - 30° C to + 125° C (- 20° F to 260° F).
- All spindle sizes available.
- Several wind-up angles available.
- Single ping available after cycle.

Mounting instructions

- Both centre stud mount or 2 screw mount.
- Standard centres : 28.6 mm.
- Maximum screw length : 4 mm.

APPROVALS:
UL, BEAB, CSA, UTE, VDE, KEMA, SEMKO, IMQ

