

# 15CA-15 - TEMPERATURE PROBE WITH DRILLED TUBE

COD. PROD. 15CA-15

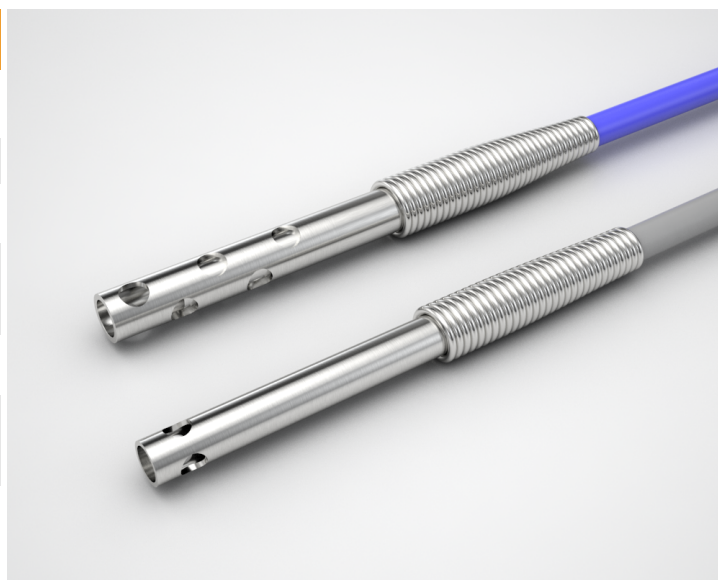


## DESCRIPTION

Probes with a fast response time suitable for no extreme environmental conditions. This probe is customizable on customers' requirements.

## TECHICAL DATA

PRODUCT CODE	15CA-15
TEMPERATURE RANGE	(0+600)°C (according to the configuration)
DEGREE OF PROTECTION	According to the configuration
SENSOR	NTC-PTC-PT100-PT1000-Thermocouple (more sensors are available on request)
CASE MATERIAL	Stainless steel (more materials available on request)
CABLE MATERIAL	TPE, silicone, PVC, fluoropolymers, fiber glass (more materials available on request)
TERMINALS	Tinned, pins, connectors (other terminals are available on request)
RESPONSE TIME	According to the configuration
MARKING	Laser marking on cable, label ( customizable on request)



15CA-15

