

# 15CA-30 - TEMPERATURE PROBE WITH 90° BENT TUBE

COD. PROD. 15CA-30



## DESCRIPTION

Suitable for general applications where strength and robustness are required. This probe is customizable on customers' requirements.

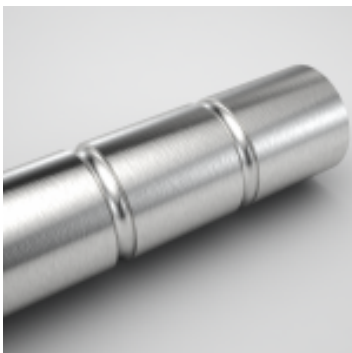
## TECHICAL DATA

PRODUCT CODE	15CA-30
TEMPERATURE RANGE	(-200+600)°C (according to the configuration)
DEGREE OF PROTECTION	IP44-67 (according to the configuration)
SENSOR	NTC-PTC-PT100-PT1000-Thermocouple (more sensors are available on request)
CASE MATERIAL	Stainless steel (more materials available on request)
CABLE MATERIAL	TPE, silicone, PVC, fluoropolymers, fiber glass (more materials available on request)
TERMINALS	Tinned, pins, connectors (other terminals are available on request)
RESPONSE TIME	5?/10? in non static liquid at 63,2% (according to the configuration)
MARKING	Laser marking on cable, label ( customizable on request)



### CIANFRINATURA

15CA-30



### ELICOIDALE

15CA-30

