

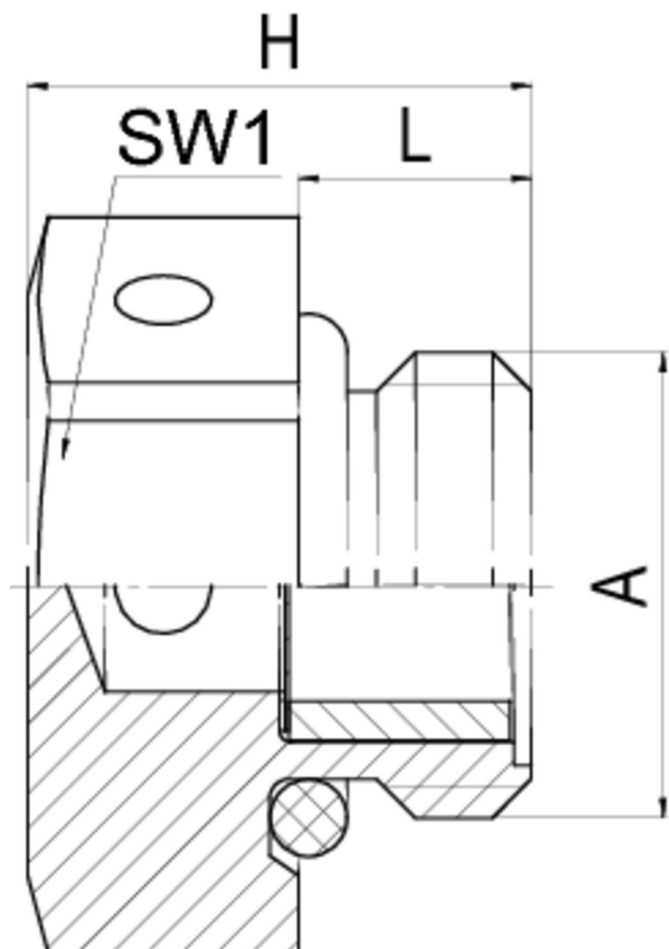
## Venting element

<b>Body</b>	Stainless steel 1.4305
<b>Membrane</b>	Polyether sulphone PES
<b>O-ring</b>	Nitrile rubber NBR
<b>Connecting thread</b>	metric, as per EN 60423
<b>Sleeve</b>	Stainless steel 1.4305 (M12x1,5) Polyamide PA6 (M20x1,5 and M40x1,5)




## Properties

	<ul style="list-style-type: none"> <li>• protection for hermetically sealed electro-technical and electronic enclosures against condensation water from alternating temperature and pressure</li> <li>• pressure, continuous ventilation and adaption of the inner pressure</li> <li>• hydrophobic and oleophobic PES-membrane</li> </ul>
<b>Typical air flow</b>	> 400 ml/min/cm <sup>2</sup> bei $\Delta p = 0,07$ bar
<b>Water entry pressure</b>	> 0,83 bar (dynamischer WEP, 30 Sekunden)
<b>Temperature range (°C)</b>	-40 +100
<b>Protection grade</b>	IP66 / IP68 - 0,6 bar (60 min.), IP69K in Vorbereitung IP66/ IP68 - 0,6 bar (60m min.)/ IP69K



## Features

Connecting thread standard length

A	L	SW1	H		Part No.
M12x1,5	6	17	13	25	JDAE12ES4305
M20x1,5	6	26	13	10	JDAE20ES4305
M40x1,5	8	45	18	5	JDAE40ES4305