

Pressure switches | SX79



SX79 Series

- o Ambient temperature: 85 °C
- o Temperature of pressure medium: 85 °C
- o Pressure connections: Inlet 4,0 or 5,5 mm (up to 500 mbar) Threaded inlet M10 x 1 mm or 1/4" Gas Snap inlet
- o Max. working pressure: 3000 mbar
- o Switch hysteresis: Nearly absent
- o Pressure medium: Pressure: Non hazardous gases - Liquids (up to 24V only) Vacuum: Non hazardous gases
- o Fixing methods: Plastic clips for 0,5 ÷ 2,5 mm panel thickness (version with inlet only)
- o Other features: Well suited for detection of dynamic pressure (or vacuum) levels, while some precautions are recommended for applications in which static vacuum or pressure has to be maintained.

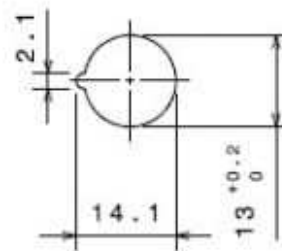
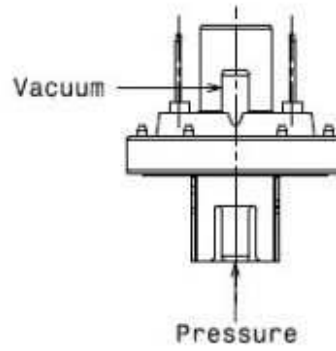
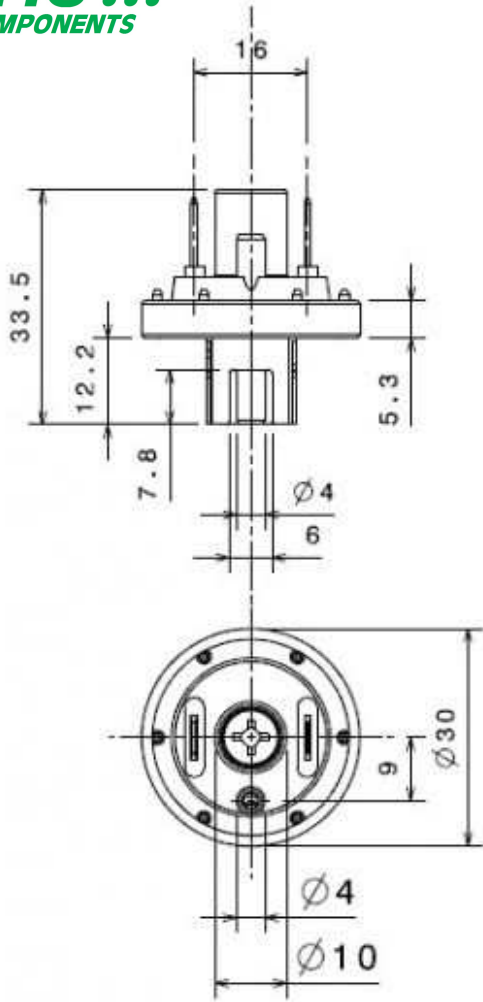
Approvals



Electrical Characteristics

Electrical function	Switch rating	Pressure range pressure	Pressure range vacuum
1 pole normally opened 1 pole normally closed	2,5 (0,5) A 250 V ~ 1E4 (pmax: 2,5 bar) 1 A 250 V ~ 5E4 (pmax: 0,8 bar) 0,02 A 250 V ~ 5E4 (pmax: 0,8 bar) 2,5 A 125/250 VAC UL/CSA 2,5 (0,5) A 250 V ~ 1E4 (pmax: 2,5 bar) 0,5 A 250 V ~ 5E4 (pmax: 2,5 bar) 0,02 A 250 V ~ 5E4 (pmax: 2,5 bar) 2,5 A 125/250 VAC UL/CSA	+15 to +2500 mbar +/- 10% +15 to +2500 mbar +/- 15%	-800 to -15 mbar +/- 15% -800 to -15 mbar +/- 15%

Dimensions (mm)



Stampa scheda