



Rotary switches



R1 Series






Rear panel cut out - 28 mm interaxes screws
 ENEC electrical rating up to 13A

- Up to 6 30° steps
- Customizing cam
- Available shafts up to 26 mm
- Applications: fan heaters, small ovens, cleaners

Products

Customising on demand

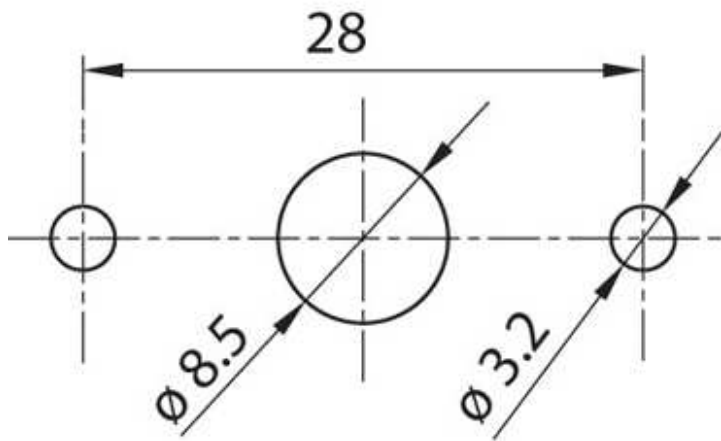
Electrical features

ENEC electrical rating up to	13A
Electro-mechanical cycles number up to	50.000
Room temperature up to	150 °C
Flammability	UL 94 V2
Heat and fire resistance	GWFI 850 °C GWIT 750 °C on demand
Contact gap	≥ 3 mm
Approvals available (to check according to the rating of each single material code)	    
Reference standards	EN 61058 UL 1054

Wiring diagrams

- Double-pole intermediate switch 2 positions
- Double-pole intermediate switch 3 positions
- Double-pole intermediate switch 4 positions
- Double-pole intermediate switch 5 positions
- Double-pole intermediate switch 6 positions
- Single-pole intermediate switch 2 positions
- Single-pole intermediate switch 3 positions
- Single-pole intermediate switch 4 positions

Cut out (mm)



Stampa scheda