



Push-button switches



SP60 Series

Round cut out - Ø 25
ENEC electrical rating up to 16A


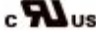



- Wiring diagrams flexibility
- Illuminated or not
- IP protection degree increased by SP60PRT
- Applications: vacuum and steam cleaners

Products

Accessories

Customising on demand

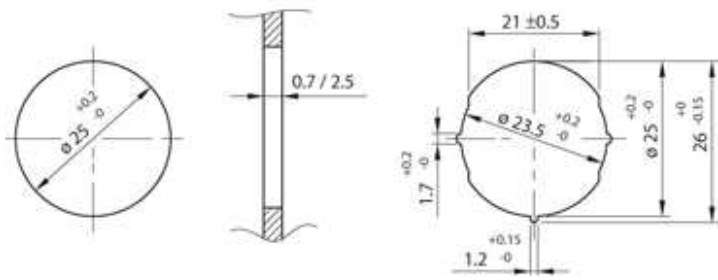
Electrical features

ENEC electrical rating up to	16A
Electro-mechanical cycles number up to	50.000
Room temperature up to	120 °C
Flammability	UL 94 V2
Heat and fire resistance	GWFI 850 °C GWIT 750 °C on demand
Contact gap	≥ 3 mm
Approvals available (to check according to the rating of each single material code)	    
Reference standards	EN 61058 UL 1054

Wiring diagrams

- Double-pole momentary switch
- Double-pole switch
- Illuminated double-pole momentary switch dependent light
- Illuminated double-pole switch dependent light
- Illuminated single-pole momentary switch independent light
- Illuminated single-pole switch semi-dependent light
- Single-pole momentary switch
- Single-pole switch

Cut out (mm)



Stampa scheda