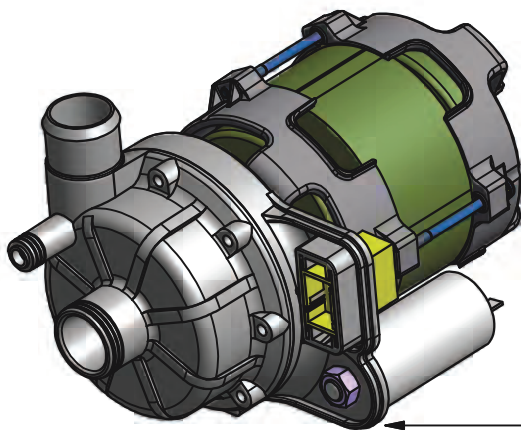


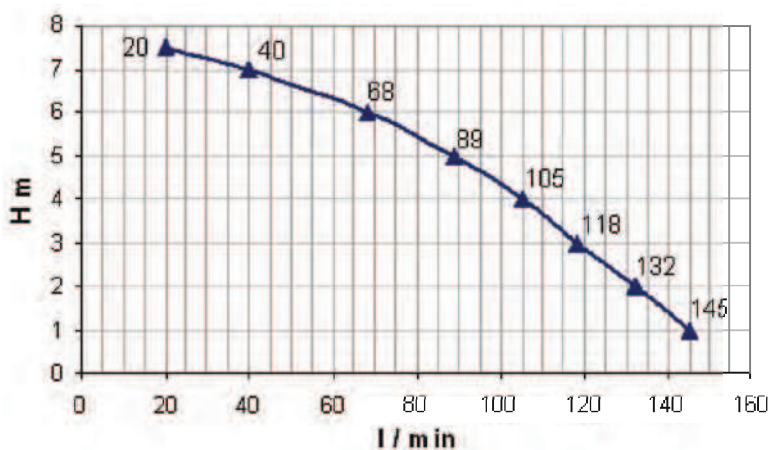
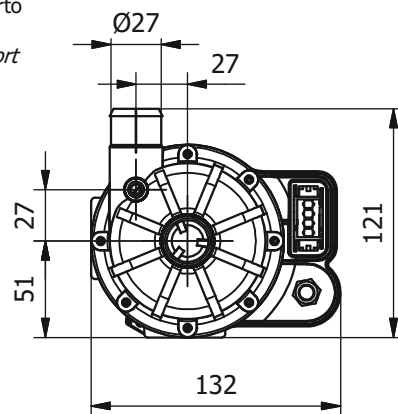
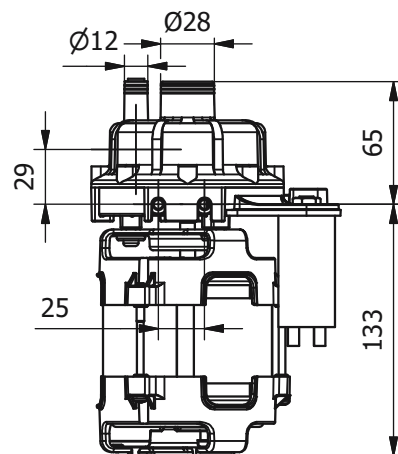


ZFCi 121

kW 0.33 Hm 7.6 max
HP 0.45 L/1' 138 max

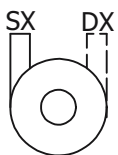


versione **ZF121** senza supporto condensatore e connettore
version ZF121 without support for capacitor and plug

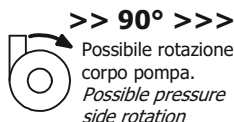


Potenza motore <i>Motor power</i>	HP 0.45	kW 0.33
Tensione <i>Tension</i>	(V)	50
Frequenza <i>Frequency</i>	(Hz)	50
Corrente assorbita <i>Power consumption</i>	(A)	1.48
RPM		2800
Condensatore <i>Capacitor</i>	(µF)	6.3
Protezione termica <i>Thermal Overload</i>	(°C)	155°C

Materiali idraulica <i>Wet end materials</i>	
Corpo Pompa <i>Pump Body</i>	PP 30 GF
Girante <i>Impeller</i>	PP 30GF
Albero Motore <i>Motor Shaft</i>	AISI 430 F
Tenuta Meccanica <i>Mechanical Seal</i>	GRAFITE/CERAMICA CARBON/CERAMIC



Sono disponibili pompe sia con mandata a SX che a DX.
Pumps with SX (left) or DX (right) pressure sides are available.



>> **90°** >>>
 Possibile rotazione corpo pompa.
Possible pressure side rotation

I motori standard sono conformi alle norme europee vigenti, su richiesta l'isolamento potrà essere conforme alla registrazione Underwriter Laboratories "DV-155-J E327568".

Standard motors are in conformity to Euro - Norms, on request insulations conform to Underwriter Registration E.I.S. "DV-155-J E327568" are available.

Classe isolamento <i>Insulation class</i>		F
Grado protezione <i>Protection class</i>	(IP)	X0
Servizio <i>Duty</i>		S1
Peso <i>Weight</i>	(kg)	3

LGB si riserva il diritto di apportare modifiche tecniche in qualsiasi momento e senza preavviso.
LGB reserves the right to make technical changes at any time without notice.