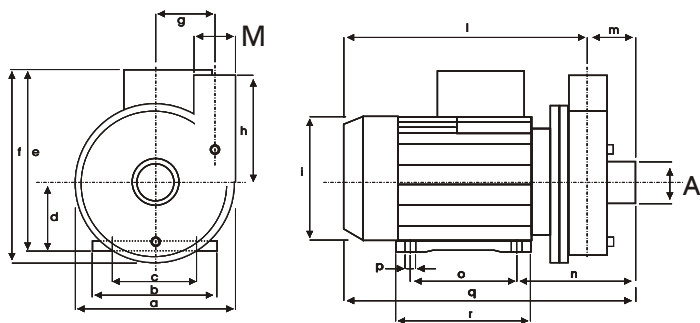




ZFP 650

kW 1.1 Hm 14.0 max
Hp 1.5 L/1' 650 max




Pompa centrifuga per impianti di idromassaggio, di filtrazione o circolazione in piscine.

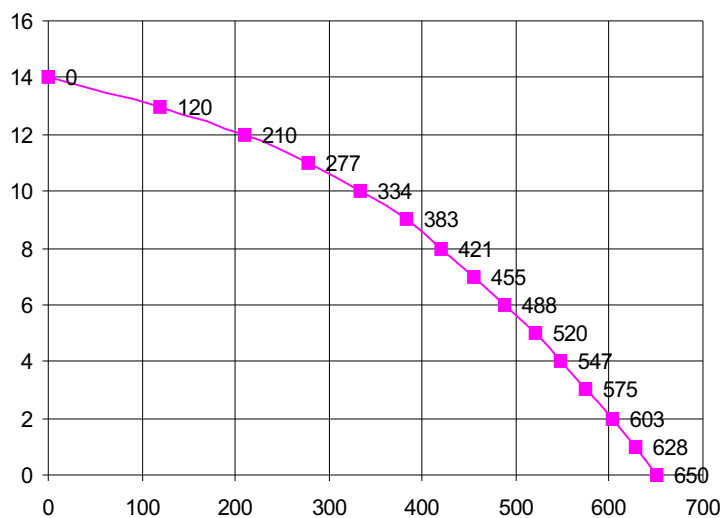
Centrifugal pump for filtering, hydro massage or circulation plants of swimming pools.

Kreiselpumpe für Hydromassage-Filter- oder Umwälzanlagen an Schwimmbecken.

Corpo Pompa Pump Body Pumpengehäuse	PP 30 GF
Girante Aperta Open Impeller Offenes Laufrad	SPS G30
Albero Motore Motor Shaft Motorwelle	C 40
Tenuta Meccanica Mechanical Seal Gleitringdichtung	GRAFITE/CERAMICA CARBON/CERAMIC KOHLE/KERAMIK
1~ 230V / 50Hz	art. n. 1096
3~ 230/400V / 50Hz	art. n. 1097

	DX	A	M
 F4:	2"	1 1/2"	

mod	a	b	c	d	e	f	g	h	i	l	m	n	o	p	q	r	kg
ZFP650	210	155	127	80	215	235	78	110	160	290	50	147	100	9	339	126	11,1



Potenza motore Motor power Motor Leistung	Hp P2	kW 1,5 1,1
Tensione/Frequenza Tension/Frequency Spannung/Frequenz	1~V/Hz 230/50	3~V/Hz 230-400/50
Corrente assorbita Power consumption Stromaufnahme	A 7,2	A 6,3 - 3,2
GPM RPM UPM		2800
Condensatore Capacitor Kondensator		25 µF
Protezione termica Thermal Overload Überlastschutz		155 °C
Classe isolamento Insulation class Isolationsklasse		F
Grado protezione Protection class Schutzklasse		IP X5
Servizio Duty Betriebsart	S1	CONTINUO CONTINUOUS DAUERBETRIEB

Ci riserviamo il diritto di apportare modi fiche tecniche

We reserve the right of technical modifications

Technische Änderungen vorbehalten

REVISIONE N.03.01/03