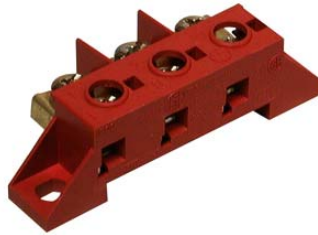








FV110 V/V

**Screw-to-Screw
Terminal Block (3 poles)**



TECHNICAL DATA

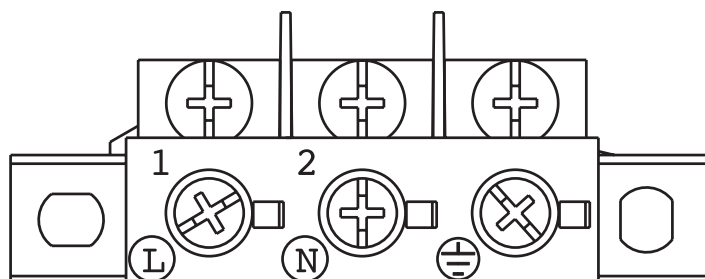
	IEC Standards	American Standards
Ratings	450V - 40A	600V - 40A
Wire size	6.0 sqmm	22 ÷ 8 AWG
Working Temperature	- 5 ÷ 150°C (short time 180°C)	23 ÷ 239°F
Plastic Material	Polyamide PA6.6 glass filled brown colour, UL94 V0, GWT 960°C	
Metal Parts	M5 zinc plated steel captive screw; 6.3 x 0.8 zinc plated steel tab insert; other parts made in zinc plated steel	
Marking	L - N - 	
Accessories	PA269	

Approvals	File Nr.	Ratings (sqmm/AWG - V - A - T)	Standard References
	E 2250	6.0 sqmm - 450V - 40A - 150°C	EN 60998-1; EN 60998-2-1
	E76048 vol. 1 sec. 4	22 ÷ 8 AWG - 600V - 40A - 115°C	UL 1059
	LR 40455	22 ÷ 8AWG - 600V - 40A	CSA C22-2 N.158-1987; E.C.N 584B

PACKAGING

Type	P-N	Pack.	Dim. Pack. (LxHxP)	Weight (Kg)
FV 110 V/V	300804	400	40x20x40	15.0

DIMENSIONAL
DRAWING



For dimensions
see FV110 product file.

