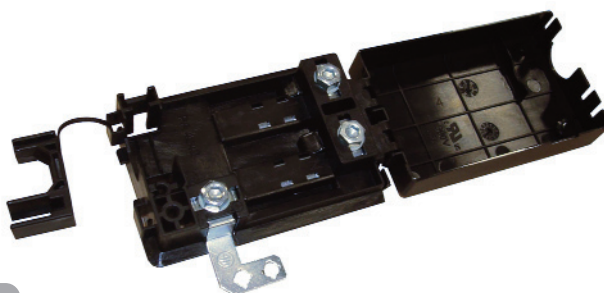





>> PA4542

Terminal box



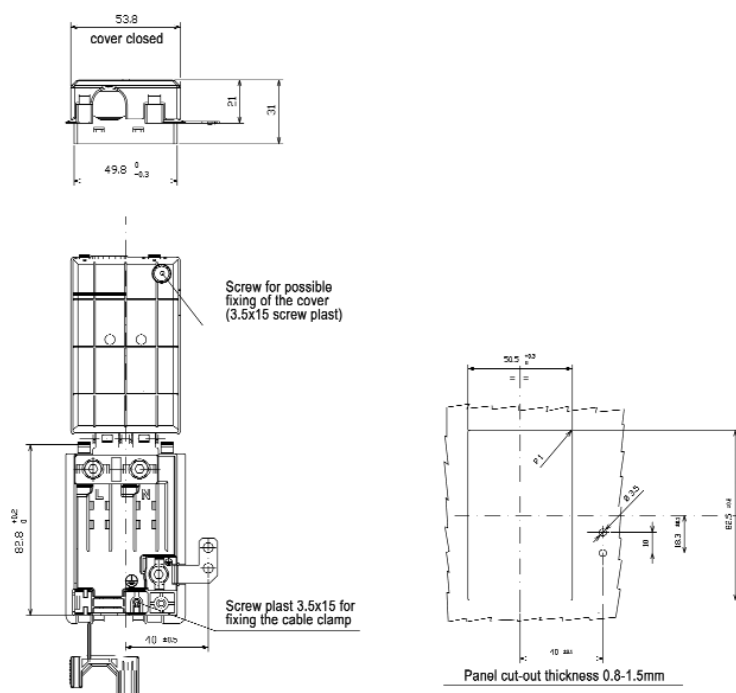
Technical data

	IEC STANDARDS	AMERICAN STANDARDS
Ratings	450V- 41A	300V - 40A
Wire size	2.5 ÷ 6.0 sqmm	8 ÷ 22 AWG (22 lb/in)
Working Temperature	- 5 ÷ 110°C (short time 140°C)	23 ÷ 221°F
Plastic Material	Polyamide, UL 94 V2, GWIT 775°C, GWFI 850°C	
Metal Parts	M5 (2.5Nm) zinc plated steel screw; 6.3 x 0.8 zinc plated steel tab insert; Other parts made in zinc plated steel	
Clamp screw and cover for plastic use	3.5 x 15 mm (0.13" x 0.59") - 0,8Nm - P.N. 910189	

Approvals	File Nr.	Ratings (sqmm/AWG - V - A - T)	Standard References
	CA02.03195	6.0 sqmm - 450V - 41A - 110°C	EN 60998-1; EN 60998- 2-1; EN 61210
	40023757	6.0 sqmm - 450V - 41A - 110°C	EN 60335-1 (VDE0700-1); EN 60998-1; EN 60998-2-1 (VDE 0613-1,2-1) EN 61210 (VDE 0613-6)
	E225540 Vol.2, sec.1	8-22 AWG - 300V - 35A - 105°C	UL 1977; C22.2 No. 182-3 - M1987

Dimensional drawing

I dati tecnici possono essere modificati senza preavviso. / The technical data can be subject to changes without notice.



>> PA4542

Packaging

Type	P-N	Pack.	Dim. Pack. (LxHxP)	Weight (Kg)
PA4542	9963211301	100	40x39x40	8
PA4542 (with screw 3.5x15)	9963201301	100	40x39x40	8

>> Notes
